

24 Holden Avenue, Whalley Range, Manchester, M16 8TA



JP&Brimelow
ESTATE AGENTS

Offers In The Region Of £200,000

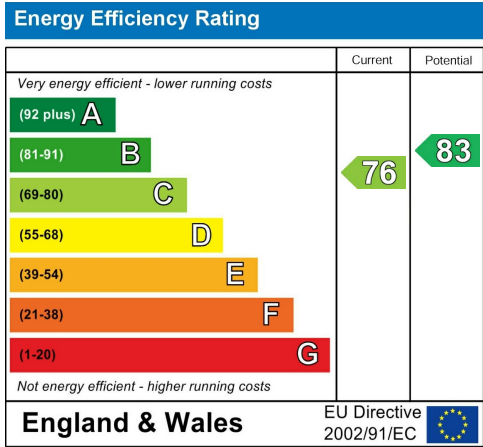
2 2 1 C

****VIDEO TOUR AVAILABLE**** An immaculately presented TWO DOUBLE BEDROOM first floor apartment situated on this highly popular development off Brantingham Road here in Whalley Range. Located nearby to good primary & secondary schools, Alexandra Park and Whalley Range Tennis & Cricket Club on Kingsbrook Road. Within a twenty-minute walk to the Metrolink station on Wilbraham Road in Chorlton and bus routes on Alexandra Road South, giving you access into Manchester City Centre, Media City and Manchester International Airport. In brief the well-planned accommodation consists; A communal entrance hall with stairs leading to all floors, a private entrance hallway with built in storage, two double bedrooms one benefitting from an en-suite shower room, a three-piece bathroom, a stylish open plan kitchen living area leading on to a SOUTH FACING balcony. The property benefits from an entry intercom system, smart electric radiators, electric gates leading to the rear resident carpark with an allocated parking space.



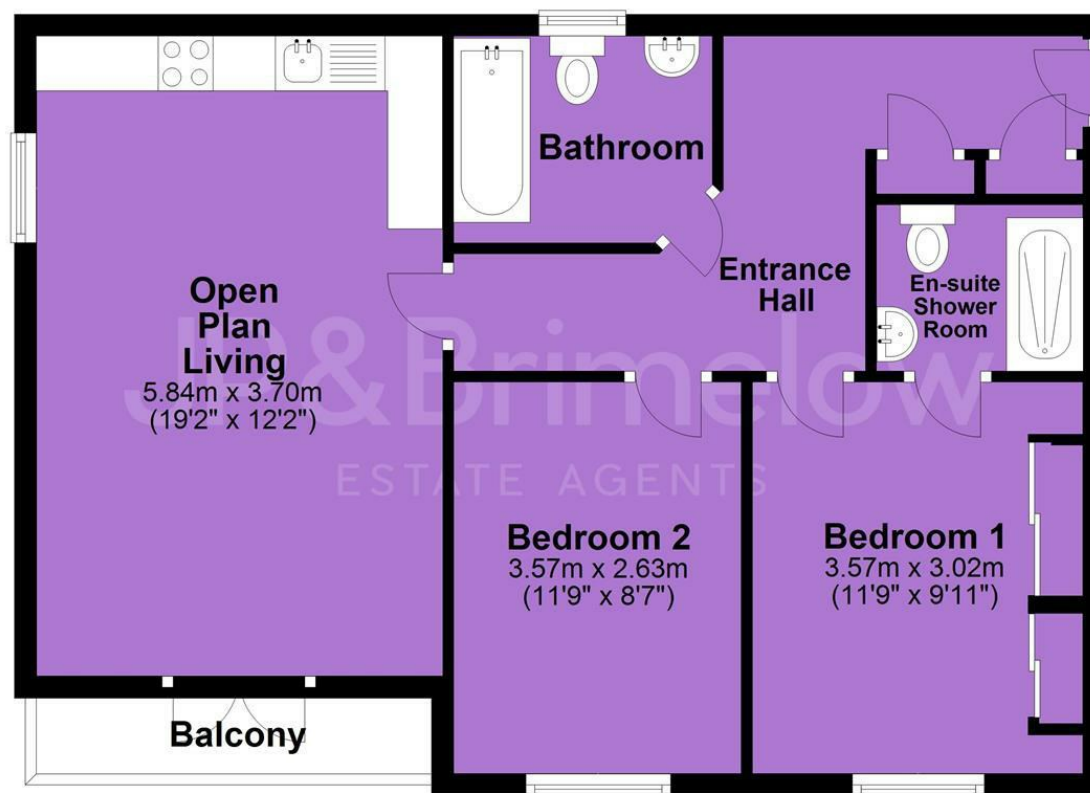


EPC Chart

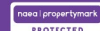


Tenure: **Leasehold** Council Tax Band: **B**

First Floor



JP & Brimelow Estate Agents Ltd
430 Barlow Moor Road, Manchester, M21 8AD
Tel: 0161 8822233
E: sales@jpbrimelow.co.uk www.jpandbrimelow.co.uk



JP & Brimelow
ESTATE AGENTS

NOTICE: JP & Brimelow Estate Agents Ltd for themselves and for the vendors or lessors of this property whose agents they are give notice that:

- (i) the particulars are set out as a general outline only for the guidance of intending purchasers or lessees, and do not constitute, nor constitute part of, an offer or contract;
- (ii) all descriptions, dimensions, references to the condition and necessary permissions for use and occupation, and other details are given in good faith and are believed to be correct but any intending purchasers or tenants should not rely on them as statements or representations of fact but must satisfy themselves by inspection or otherwise as to the correctness of each of them;
- (iii) no person in the employment of JP & Brimelow Estate Agents Ltd has any authority to make or give any representation or warranty whatever in relation to this property.

jpandbrimelowestateagents

@jpandbrimelow